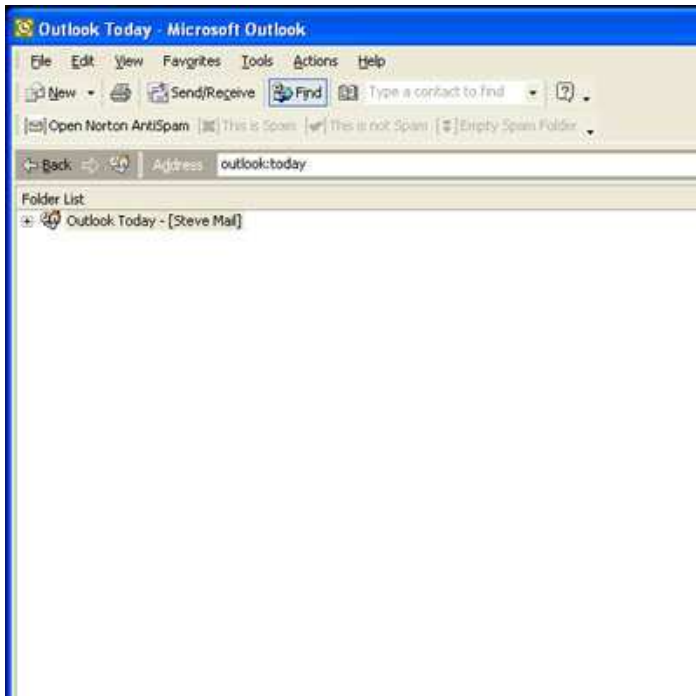
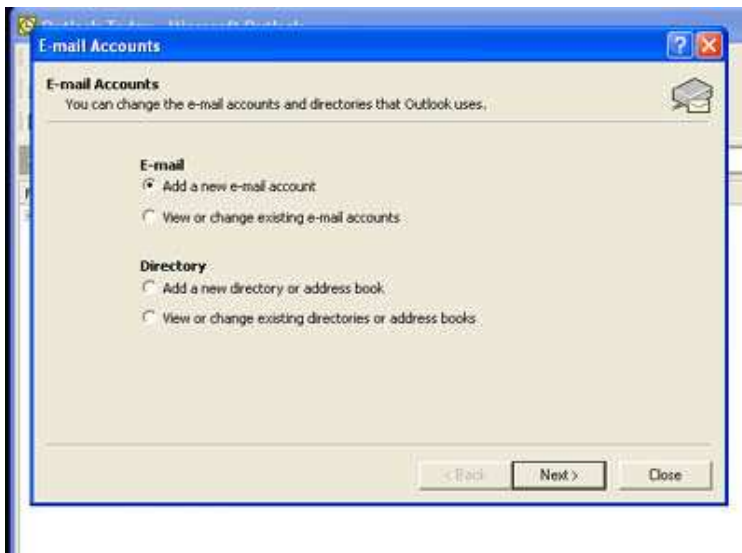


Instructions for setting up Outlook Client for pop3 access to your domain mailboxes.

Open Outlook



Open "tools" then "e-mail accounts"



Select "Add a new account", hit "next"

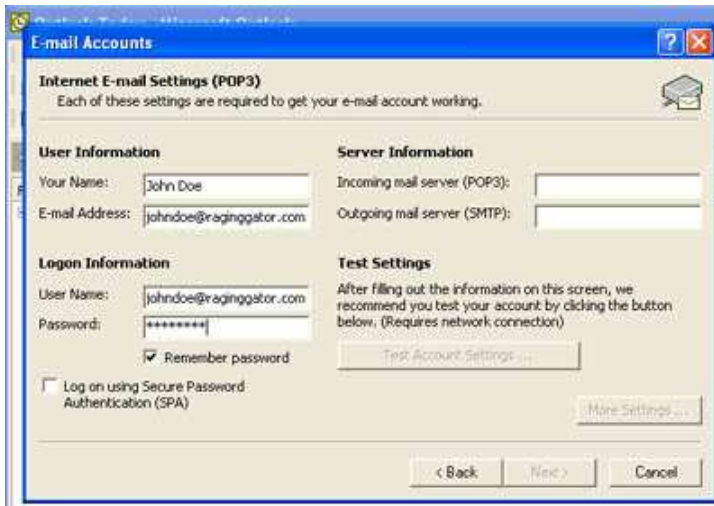
Select POP 3 from the available choices.



Hit “next” to go to the user information screen



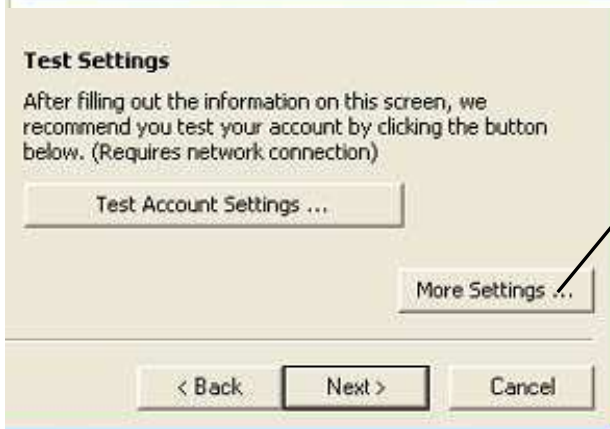
Enter your name and your e-mail address in both the “e-mail address” and “user name” fields as shown below.



Enter the password you've assigned to your mailbox through the "Smart Mail" interface. If you want outlook to remember your password, check "remember password"

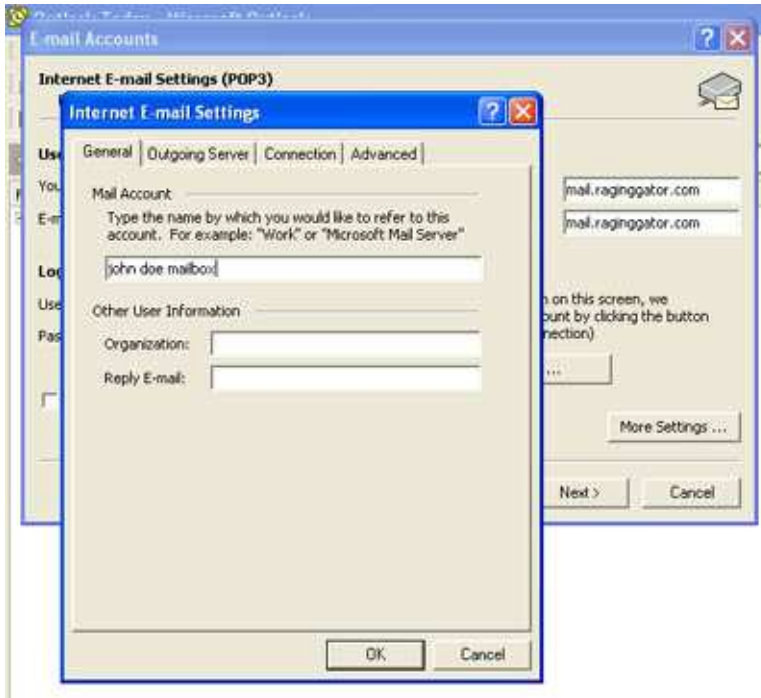
Now enter your incoming and outgoing server names as shown below.

mail.yourdomianname.(com, org, net) is the correct entry for both fields.

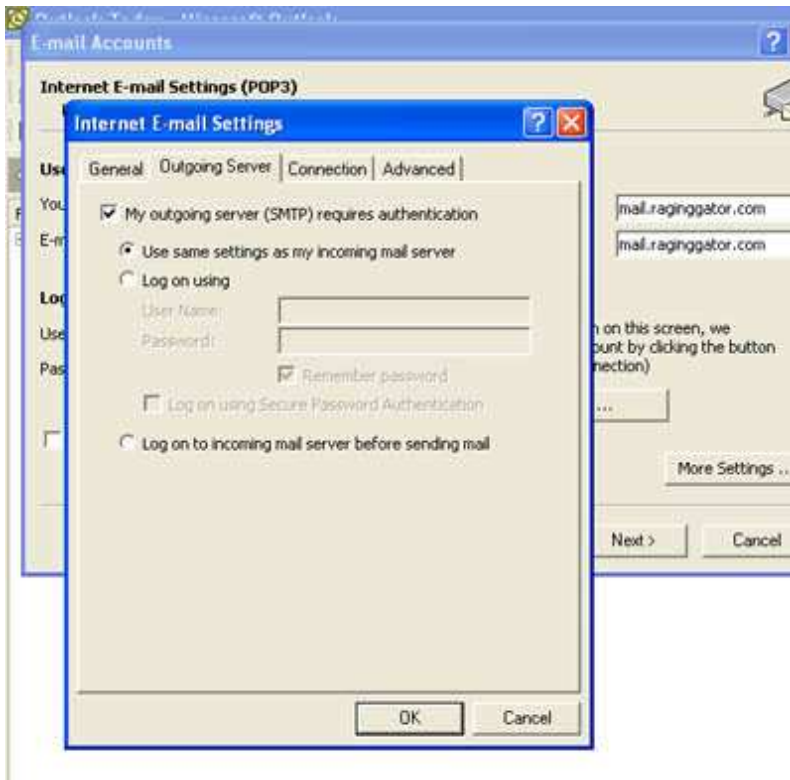


Go to "more setting" before you test the settings

Enter a name for the e-mail account setting



Check the box that says “My outgoing server (SMTP) requires authentication and “Use same settings as my incoming mail server”



Hit “OK” to close the box

Hit "Test Account Settings"

Information
Name: John Doe
Email Address: johndoe@raginggator.com

Server Information
Incoming mail server (POP3): mail.raginggator.com
Outgoing mail server (SMTP): mail.raginggator.com

Account Information
Name: johndoe@raginggator.com
Password: *****
 Remember password

Test Settings
After filling out the information on this screen, we recommend you test your account by clicking the button below. (Requires network connection)

Test Account Settings ...

Log on using Secure Password Authentication (SPA)

More Settings ...

< Back Next > Cancel

You should see five green check marks as below

Test Account Settings

Congratulations! All tests completed successfully. Click Close to continue.

Stop Close

Tasks	Status
✓ Establish network connection	Completed
✓ Find outgoing mail server (SMTP)	Completed
✓ Find incoming mail server (POP3)	Completed
✓ Log onto incoming mail server (POP3)	Completed
✓ Send test e-mail message	Completed

Log on using Secure Password Authentication (SPA)

More Settings ...

< Back Next > Cancel

Close the box.

Information
Name: John Doe
Email Address: johndoe@raginggator.com

Server Information
Incoming mail server (POP3): mail.raginggator.com
Outgoing mail server (SMTP): mail.raginggator.com

Account Information
Name: johndoe@raginggator.com
Password: *****
 Remember password

Test Settings
After filling out the information on this screen, we recommend you test your account by clicking the button below. (Requires network connection)

Test Account Settings ...

Log on using Secure Password Authentication (SPA)

More Settings ...

< Back Next > Cancel

Hit "Next". You should see the following box indicating you're finished.

